

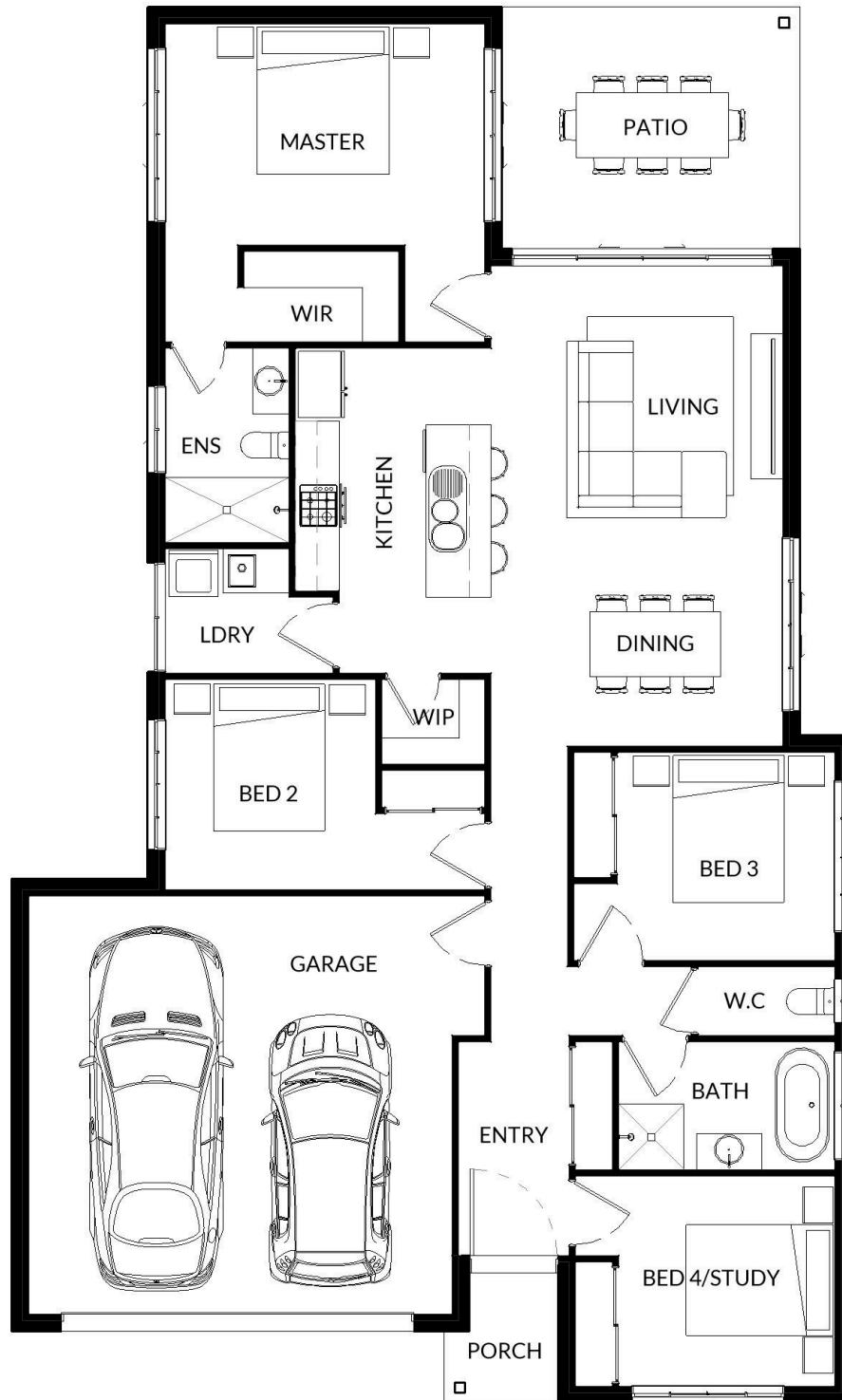


Sudbury 187

The Sudbury home design spans 187 square meters and features four bedrooms, two bathrooms, an open-plan living area that flows seamlessly to a covered patio, a kitchen with a walk-in pantry, and a master bedroom positioned at the rear for added privacy. This design is an excellent choice for entry-level buyers, first-time homeowners, or investors.



Neater Homes has proudly been designing and constructing premium and luxury homes across Cairns, Port Douglas, the Tablelands, and as far south as Cardwell for over 40 years.



FEATURES

- 4 Bedroom including master suite at rear of home
- Two Bathrooms
- Modern kitchen with Walk-in Pantry
- Open plan Living and Dining
- Great layout for families or investors

DESIGN PARTICULARS

Living Area	132.70m ²
Alfresco	13.70m ²
Porch	2.50m ²
Garage	38.80m ²
Total	187.70 m²

DIMENSIONS

Minimum Block Width	16 Mtrs
Sudbury Width	11.60 Mtrs
Sudbury Length	19.30 Mtrs

The artists impressions, photographs & plans shown are intended to depict a concept only and may show fixtures, fittings, finishes, structures, pools or landscaping that are not standard inclusions or offerings. Prospective customers should refer to the inclusions described in their contract and not rely on these images. All designs are Copyright ©Neater Constructions (Q) Pty Ltd and all plans are Copyright. QBCC 21788.